

Spansign

The perfect in-store media system

Advertising, Communication and Information System

With this stylish, eye-catching modular display, your message will always be crystal clear. This principle lies at the very heart of our new Spansign system. Light up what you're communicating with a high end, fully modular, digital signage system.

A Bright Concept

The Spansign Viewer system consists of a screens suspended in a low-voltage track. We've integrated new slim LED backlights into the frame that light the inserted transparencies up like an high resolution LCD display. Simply insert your graphic transparencies and get them noticed immediately!

Moving Pictures

The Spansign PC system integrated with an Intel® AtomTMN270 CPU will transform your content into a Full HD movie or a slide show with audio background. Data is fed into the Spansign remotely via Bluetooth or a WiFi connection or through one of two USB ports located conveniently on the side of the slim bezel.

Endless Possibilities

Spansign Viewers mounted in the elegant, easy to setup, vertical ROD system will surely create a long lasting impression. A combination of Viewers and the Spansign LCD displays in one setup will make for something truly exceptional, mount multiple displays in landscape and in portrait mode simultaneously and watch how your message truly comes alive !

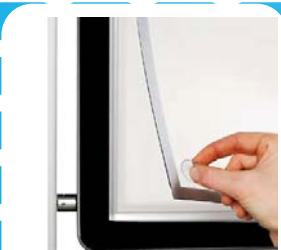
"Combines still images with moving video, a perfect eyecatcher..!"

- Energy friendly power system
- Fully customizable
- Slim design
- Great aesthetics



Spansign

The Spansign Viewer system



Instant Eye Catcher

The stunning Spansign **Viewer** system uses transparency prints which are placed behind a clear Plexiglas screen. A very efficient of high-end, low power LED back light design is used to give life to your message instantly and let it be seen from a distance !

“Plug and play”

Changing the transparency sheets takes less than 30 seconds, maintenance to the entire Spansign **Viewer** system is close to none. From now on your messages are crystal clear and highly noticed in a display system that requires minimal cost and instalation time. See the magic happen! - With the unique new, eye-cathing **Spansign Viewer**.



Spansign Viewer

Combine the static image of the Spansign **Viewer** with other available elements such as the **Mediaplayer** version and / or Spansign all-in-one **PC with WIFI** ! Watch how the combination of static and motion images instantly translate into a one of a kind in-store display experience when multiple units are used with in the patented vertical ROD system !

Specification overview:	Spansign - A2 - Viewer	Spansign - A3 - Viewer
Active display area:	820 x 460 mm	475 x 270 mm
Brightness:	1000 ^{cd} /m ²	1000 ^{cd} /m ²
Resolution:	(uses a transparency print)	(uses a transparency print)
Aspect ratio:	16:9	16:9
Contrast ratio:	n.a.	n.a.
Viewing angle r/l:	179 / 179	179 / 179
Backlight:	LED	LED
Mounting:	ROD II system	ROD II system
Operating humidity:	10 % ~ 80 % (N.C.)	10 % ~ 80 % (N.C.)
Storage temp:	- 20 °C ~ 60 °C	- 20 °C ~ 60 °C
Operating temp:	0 °C ~ 40 °C	0 °C ~ 40 °C
Net weight (Kg):	9.1 kg	3.9 kg
Partnumber:	SLB3705-EAN-A01	SLB2105-EAN-A01

Spansign

The Spansign all-in-one PC

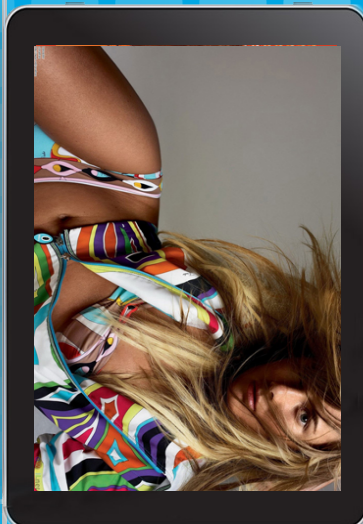
Full High Definition e-Motion

Highlight your printed designs and combine them with Motion Dynamic Adverts. The LCD-PC model of the Spansign does it all ! It plays any file, how and when you like it. Let this stylish all - in - one digital system transform your messages into a truly unique experience.

The Spansign requires minimal installation time and cost. No special skills or expensive equipment is needed, no cables and no brackets are required. Update your content directly through Wifi, Bluetooth or use one of the USB ports. Combine these LCD display with the Spansign Viewer system to fully suit your message requirements.

Modular design

All of the Spansign modular system parts are available separately, the flexibility of the systems allows for a creative combination of various displays, mounted in portrait and / or landscape mode with a static and or a motion display. The system truly takes on a new visual dimension when this combination is applied.



Partnumber:	SLB3712-PAN-032-A01	SLB2112-PAN-032-A01
Active display area:	460.89 x 819.36 mm	268.11 x 476.64 mm
Brightness:	400 cd/m ²	250 cd/m ²
Resolution:	1920 x 1080	1920 x 1080
Aspect ratio:	16:9	16:9
Contrast ratio:	4000:1	1000:1
Viewing angle:	90/90	170 / 160
Backlight:	LED	LED
Mounting:	ROD II system or VESA	ROD II system or VESA
Operating humidity:	10 % ~ 80 % (N.C.)	10 % ~ 80 % (N.C.)
Storage temp:	- 20 °C ~ 60 °C	- 20 °C ~ 60 °C
Operating temp:	0 °C ~ 40 °C	0 °C ~ 40 °C
Net weight (Kg)	21 Kg	7.7 Kg
CPU support:	Intel® Atom™ N270	Intel® Atom™ N270
Board type:	Gene-9455B	Gene-9455B
Chipset:	IntelR 945 GSE+ICH7M	IntelR 945 GSE+ICH7M
System memory:	1GB DDRII / max 2 GB	1GB DDRII / max 2 GB
Storage:	CF	CF
Ethernet:	2 x Gigabyte	2 x Gigabyte
WiFi:	Yes	Yes
Serial / COM:	YES, 1 x / 2x USB 2.0	YES, 1 x / 2x USB 2.0
Speakers:	Yes, 2 x 3W	Yes, 2 x 3W
Driver support:	Win XP / Win7, Linux	Win XP / Win7, Linux